

A Rare Find On Grange Road, Hartshill, Nuneaton, CV10 0SS

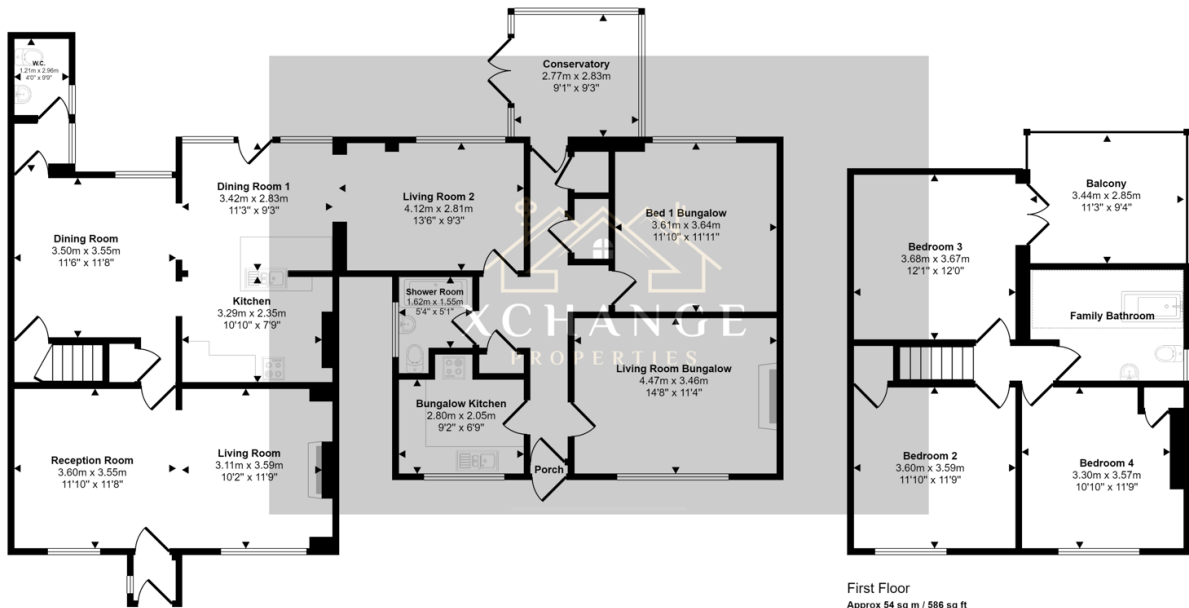
£500,000

🛏 4 🚿 3 🚗 3





Approx Gross Internal Area
194 sq m / 2085 sq ft



Ground Floor
Approx 139 sq m / 1489 sq ft

First Floor
Approx 54 sq m / 586 sq ft

Denotes head height below 1.5m

This floorplan is only for illustrative purposes and is not to scale. Measurements of rooms, doors, windows, and any items are approximate and no responsibility is taken for any error, omission or mis-statement. Icons of items such as bathroom suites are representations only and may not look like the real items. Made with Made Snappy 360.

You will NEVER see a property like this again! | 3 Bedroom property connected to a 1 Bedroom Bungalow to rear | Ideal for multi-generational living | Large garden with additional land to rear | single garage to rear | Spacious property with multiple living spaces | 2 kitchens | Period features | You need to view to fully appreciate the opportunity!